

Hatchlands Park, Ingleby Barwick



£169,995

**IH** INGLEBY HOMES





Available with no forward chain, this modern town house delivers deceptively spacious accommodation over three levels.

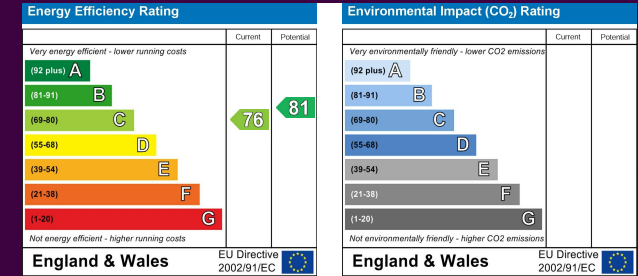
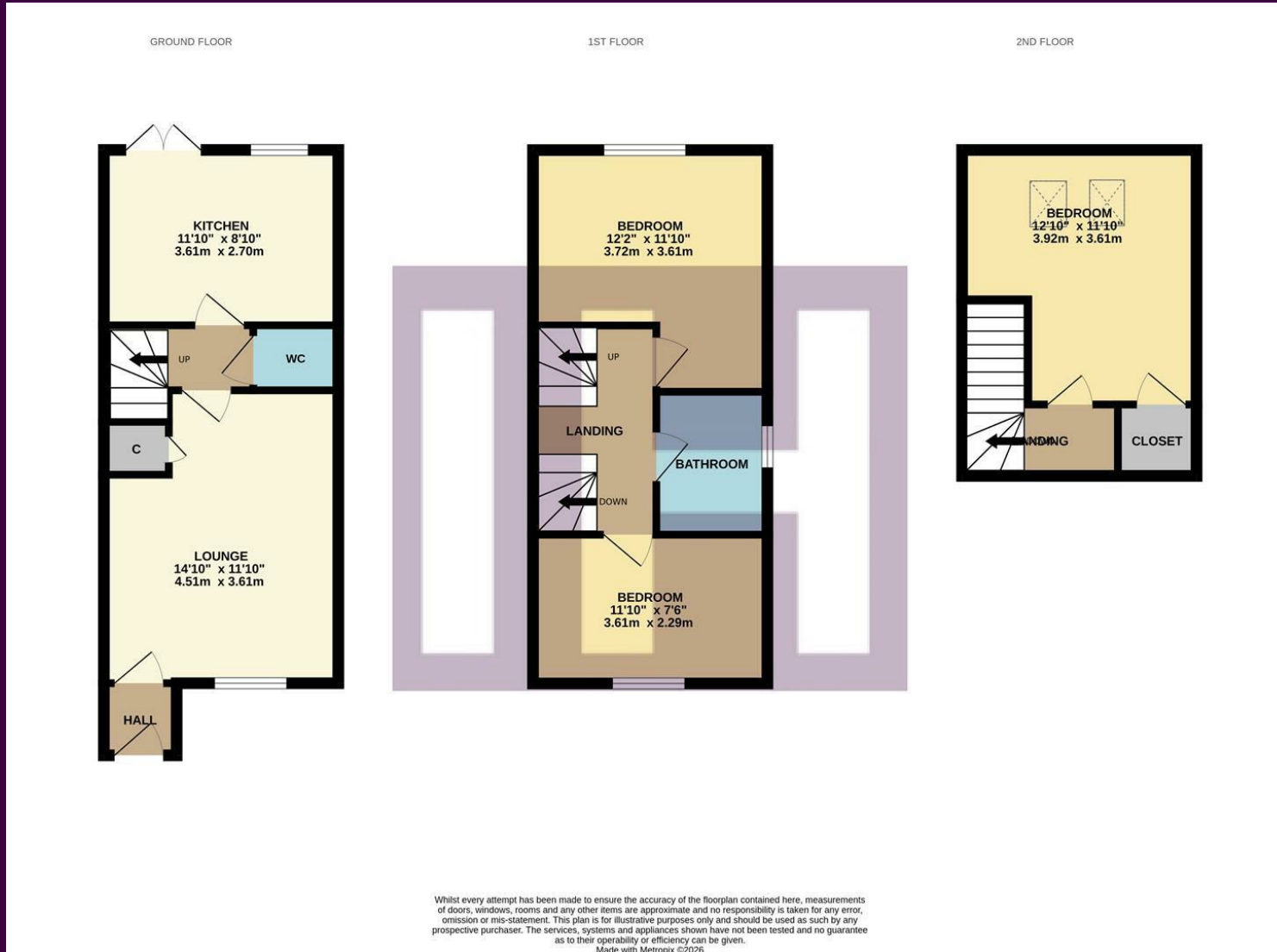
Situated at the head of the cul-de-sac, with fabulous nearby amenities and 'highly regarded' schooling, this is a property that may appeal to a wide variety of buyers.

The ground floor brings an entrance hall, lounge, inner hall, cloakroom/WC and open-plan kitchen/diner. Two of the double bedrooms and the modern family bathroom are found on the first floor, with the third double bedroom, which enjoys a walk-in closet/dressing room occupying the second floor.

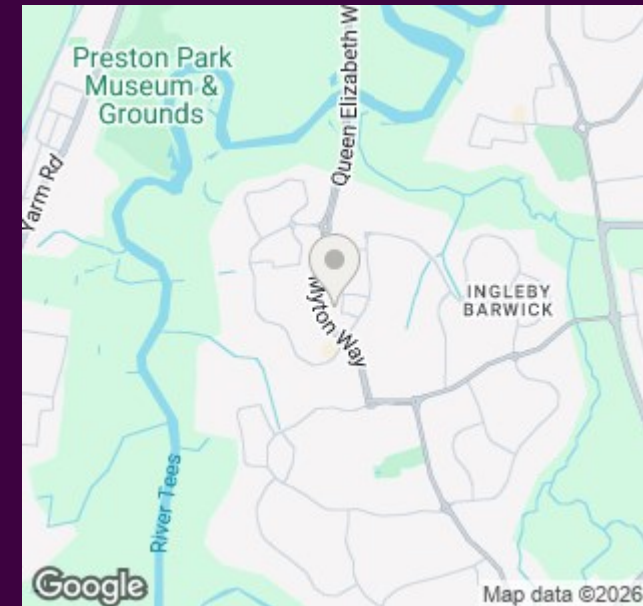


A drive in front caters for two vehicles off-road, whilst the rear garden is fully enclosed, with lawn, connecting path and patio.

# The Layout



# The Location



Council Tax Band:  
Tenure:

C  
Freehold



- Popular 'Simonside' design
- Accommodation over three levels
- Favoured 'Broom Hill' location within Ingleby Barwick
- Three double bedrooms, top floor with walk-in closet/dressing room
- Enclosed rear garden, two car drive
- Ideal first purchase or buy to let
- No forward chain